

# E1F E2F

Vertex Anchor and Injection Grout

# V ER TEX

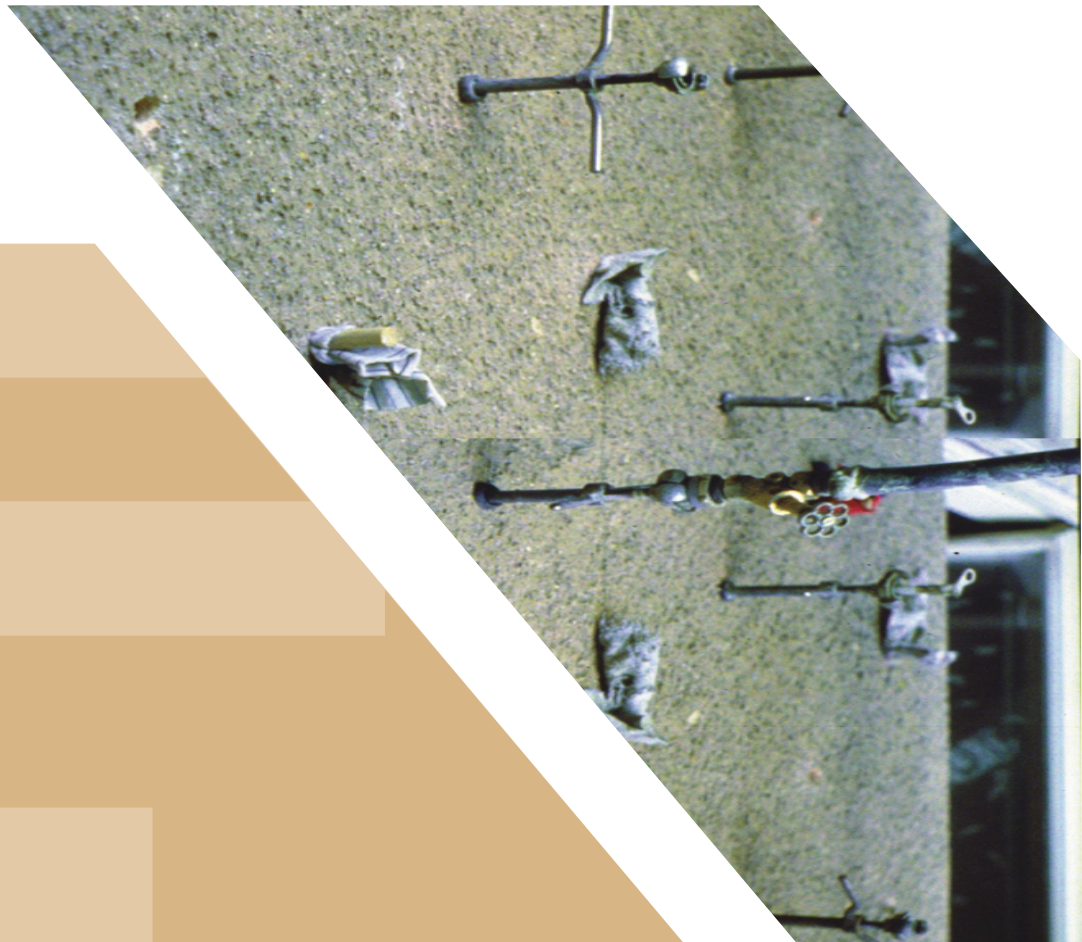
Formerly Pagel Pakistan Pvt. Ltd.

## Description

- High flow capacity cement-based formula with non-shrink properties.
- Free of aggregates.
- Develops high early and final strengths with great adhesion.
- Impervious to water and extensively resistant to oil.
- Corrosion Resistant.

## Recommended Uses

- Fixing of anchoring in rock material, ground, concrete and masonry.
- Injection of cracks, joints, gravel patches and cavities in vertical and horizontal positions.



ADMIXTURES

SPECIAL ADMIXTURES

SURFACE IMPROVEMENT

GROUTS

WATER PROOFING

FLOORING

INDUSTRIAL COATINGS

JOINT SEALANTS

REPAIR / CRACK INJECTION

TILING SYSTEMS

## Technical Data

TYPE			E1F	E2F
Quantity of water pro 20 kg		l (max.)	6-7	7-8
Consumption (dry motar)		Kg/dm <sup>3</sup>	1.5	1.5
Density of freshly Mixed mortar		Kg/dm <sup>3</sup>	1.97	1.99
Adhesive Tension	28 d	PSI	696	638
Measure of flow	5 Min.	Inch	54.33	-
		cm	138	-
	60 Min.	Inch	45.28	-
Expansion	24h	Vol.%	+ 0,5	+ 0,5
	28 d	Vol.%	+ 0,3	+ 0,4
Compressive strength (DIN1164)	24 h	PSI	5,075	4,640
	7 d	PSI	7,395	6,380
	28 d	PSI	8,280	7,975
Bending strength	24 h	PSI	725	870
	7 d	PSI	870	1,015
	28 d	PSI	1,015	1,160

### Important Information:

**Supplied in:** 20 kg Bags.

**Storage:** Dry, in original sealed packaging.  
Out of direct sunlight.

**Shelf life:** 6 months in sealed bags.

The adhesive tension was measured with M33-anchor, an adhesion distance of 3.94 inch and a drill hole of 1.89 inchø.

## Application Guidelines

### Substrate preparation:

Carefully clean, remove loose and adhesion-reducing parts as well as cement slurry. Pre-wet sufficiently.

### Mixing:

Apart from a residual quantity, pour water into the forced-circulation mixer. Add dry mortar and mix for approximately 3 minutes.

Add the rest of the water and mix for a further 2 minutes.

### Processing:

The casting, injection or pumping process should proceed directly.

### Processing Time:

	E1F	E2F
	Approx. 45 min.	10 min. (at 30°C)
	Approx. 60 min.	15 min. (at 20°C)
	Approx. 90 min.	15 min. (at 5°C)

### Caution:

Protect exposed surfaces against wind, draughts and premature water evaporation e.g. with plastic foil.

### Protection:

Lower temperatures delay the development of strength and reduce flow capacity, higher temperatures accelerate these. Colder preparation water interferes with flow capacity.

The information provided in this leaflet is supplied by our consulting service and is the end result of exhaustive research and extensive experience. However, it is without any liability on our part particularly regarding third party proprietary rights. This information does not relieve the user of the responsibility for verifying that the products and processes are suitable for the intended application. The data presented was derived from tests under normal climate conditions according to DIN 50014 and mean average values and analysis. Deviations are possible when delivery takes place. Given the recommendations may differ from those shown in this leaflet, written confirmation should be sought. It is the responsibility of the purchaser to ensure they have latest leaflet issue and that its contents are current. Our customer service staff will be glad to provide assistance at any time. We appreciate the interest you have shown in our products. This technical datasheet supersedes previously issued information.

**VERTEX**  
Chemicals (Pvt.) Ltd.

Plot # 1-A Misc Zone,  
Value Addition City,  
Sahianwala Road Khurriawala,  
Faisalabad, Pakistan.

Phone: +92 (0) 41 8507212-13  
Fax: +92 (0) 41 850 7214  
Email: info@vertexchemicals.pk  
Website: vertexchemicals.pk

ISO 9001: 2008  
APPROVED

